



Information Sheet

AIE Red conjugated Goat anti-Mouse IgG antibody (AIERGAM)

Species reactivity: Mouse

Host/Isotype: Goat/IgG

Class: Polyclonal

Type: Secondary antibody

Immunogen: Gamma immunoglobins (heavy and light chains)

Application(s): Western Blot: suitable

Lateral Flow Assay: suitable

Conjugate: AIE Red

Optimal excitation: 532 +/- 20nm

Optimal emission: 632 +/- 20 nm

Form: Liquid

Buffer: Tris-buffered Saline with 0.05% Tween 20 pH 7.4

Storage: Store at 2-8 °C. Avoid freeze / thaw cycle. Store in the Dark.

Target: IgG

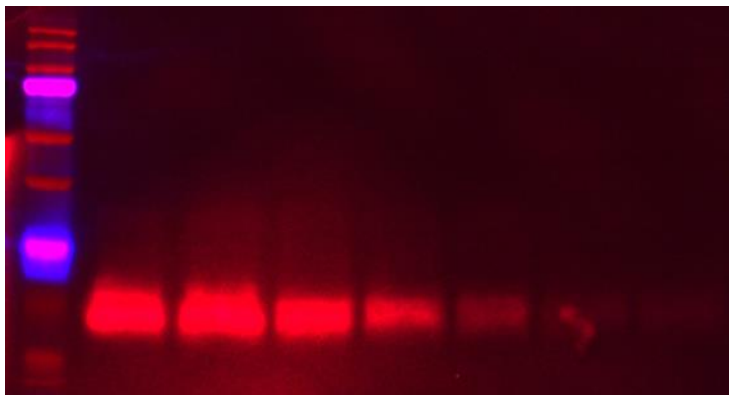
Antibody form: Whole antibody

General notes:

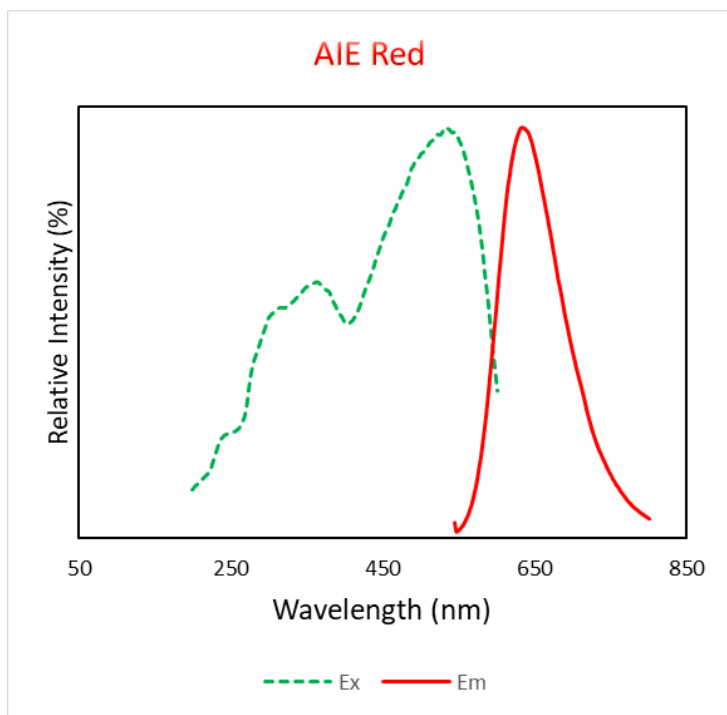
Formation of precipitate in AIE conjugated antibody is normal. Make sure the precipitate is thoroughly resuspended before use either by (1) Vortexing for at least 10 seconds or (2) Soaking the antibody in ultrasonic bath for 30 seconds.

Suggested dilution for Western Blot: 1:1000-1:5000

Images



Western blot for the detection of beta LH subunit at different concentration (from left to right, 220ng to 22ng). Intact LH protein was loaded and ran into the SDS PAGE gel. After the protein transfer from gel to the PVDF membrane, the membrane was washed with TBST and block with 5% BSA. The membrane was then incubated with mouse monoclonal primary antibody against beta-subunit for LH (1:1000) in TBST with 5% BSA. The AIE(Red) conjugated Goat anti-Mouse IgG antibody (1/1000X) in TBST with 5% BSA was used to detect the primary antibody on the PVDF membrane. Image was captured by ChemiDoc using Starbright B700(Red) and Cy3(Blue) channels.



Fluorescence excitation and emission spectra of AIE Red dye.